

本公司及董事会全体成员保证信息披露内容的真实、准确、完整，没有虚假记载、误导性陈述或重大遗漏。

65,000.00

20%

90%

10

2019 4 28

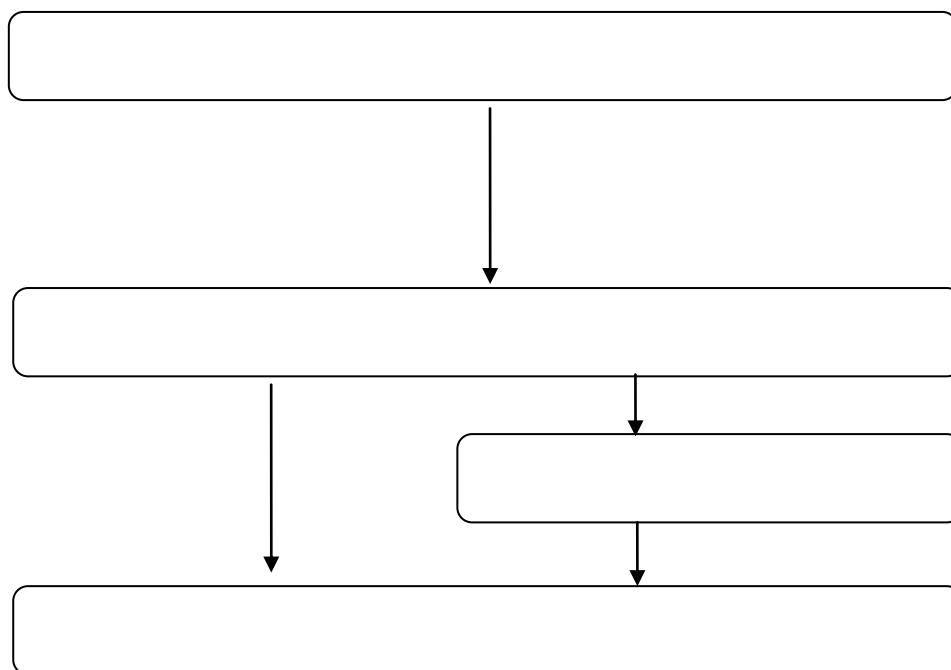
5%

	50
	640,000.00
	2008 5 12
	915301006736373483

:

	2018 12 31	2017 12 31
	3,618,632.71	3,556,363.40
	2,220,464.08	2,238,513.03
	1,398,168.63	1,317,850.37
	2018	2017
	1,131,692.46	632,441.21
	21,292.18	15,884.53
	1,087.84	131.52

2017 12 31 /2017      2018 12 31 /2018



A

90%

20

=

20

/

20

6.50

6.50

5.00

6.50

\*76.923%

5.00

P0

D

N

K

A

P1

$$P1 = P0 - D$$

$$P1 = P0 / (1 + N)$$

$$P1 = (P0 + A - K) / (1 + K)$$

$$P1 = (P0 - D + A - K) / (1 + K + N)$$

2019

73.65

1

2

3

2019

0